

West Barnes Lane Motspur Park, KT3 6HZ

£450,000 Leasehold - Share of Freehold



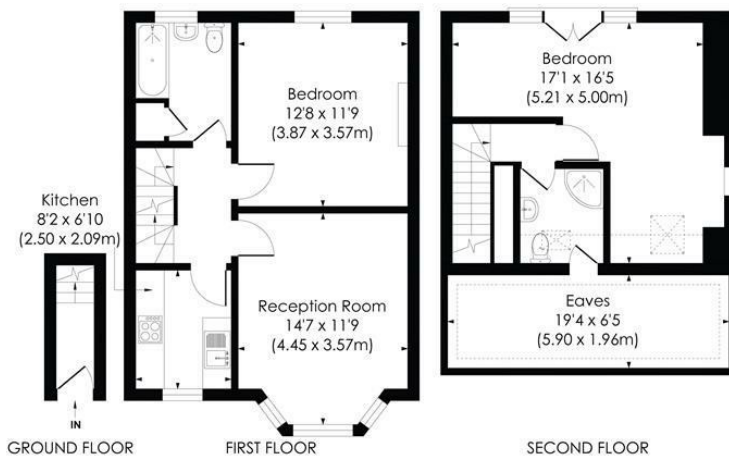
WEST BARNES LANE, KT3 6HZ - This beautifully presented TWO DOUBLE BEDROOM, TWO BATHROOM, split level Maisonette is perfectly located for access to both Motspur Park and Raynes Park. There is a spacious reception room, newly fitted separate kitchen, modern bathroom and shower room and two good sized double bedrooms. No Onward Chain - Share of Freehold.

WEST BARNES LANE, KT3

Approx. Gross Internal Floor Area

919 Sq. ft/85.37 Sq. m (Including reduced height)

754 Sq. ft/70.05 Sq. m (Excluding reduced height)



Energy Efficiency Rating		
	Current	Potential
Very energy efficient - lower running costs		
A (91-100)		
B (81-90)		
C (69-80)		
D (55-68)		
E (39-54)		
F (21-38)		
G (1-20)		
Not energy efficient - higher running costs		
England & Wales	61	79
EU Directive 2002/91/EC		

- WEST BARNES LANE, KT3 6HZ
- Two Double Bedroom - Two Bathroom
- Split Level Period Maisonette
- Recently Refurbished Throughout
- Share Of Freehold - No Onward Chain
- Newly Fitted Kitchen and Bathrooms
- Easy Access to Motspur Park Station
- Easy Access to Raynes Park Station
- EPC -
- Council Tax Band -

For Free Mortgage Quote and Best Mortgage Rates, call Ellisons Mortgage Advisor on 0208 944 9595



Although these particulars are believed to be correct, their accuracy is not guaranteed and they do not form part of any contract.

Celebrating 30 years
of successful Sales and
Lettings in Merton

